



# Welcome to northern **H**esse

A perfect position ....



# CONTENT...

Northern Hesse in figures	4	Top-Logistics Locations	18
The region of northern Hesse	6	Diemelstadt	19
The location	8	Wolfhagen – Breuna	20
Northern Hesse – Central and close by		Goods distribution centre of Kassel (GVZ)	21
The life	10	Schwalm-Eder Mitte	22
Northern Hesse – Lovely and lively		Mecklar/Meckbach	23
Unique from northern hesse	12	Neu-Eichenberg	24
The jobs	14	Legal notice	25
Northern Hesse – Home to innovative companies			
The companies	16		
Northern Hesse – Tradition and modernity in harmony			





# A PERFECT POSITION ...

... because a range of global market leaders already realized the central position!



... because the low transport costs, created by the location itself, bring a competitive leading edge for you and your clients!



... because the latest cut-off time in Germany is a benefit for all companies which appreciate punctuality and reliability!



... because not only the University of Kassel generates qualified professionals!



... because your company can use MoWiN.net and deENet as fully functioning and established networks to connect all over Europe!



... because these reasons underline northern Hesse's strength to be a privileged location for the real estate sector!



... because the UNESCO-World Cultural Heritage enhances the significance of northern Hesse's culture!



... because the high value placed on culture and leisure in northern Hesse makes the ideal complement to life and work!



... because there are commercial premises available now!



... because it is not just companies that know to treasure short routes!



A perfect position ...

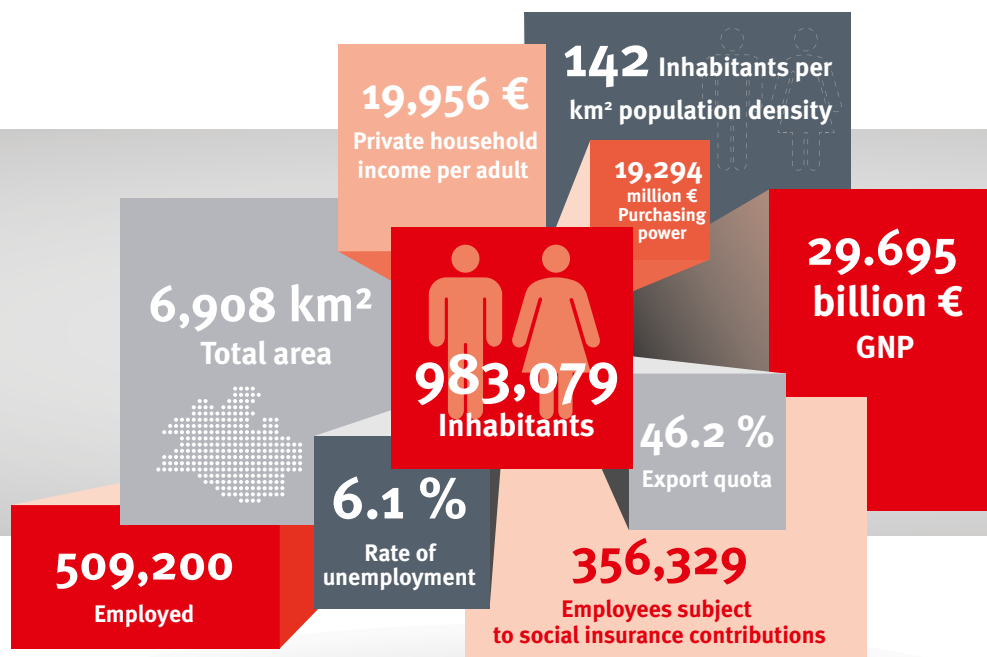
# NORTHERN HESSE IN FIGURES...

Northern Hesse is right at the top, in more ways than one. Geographically central, the region enjoys an outstanding connection to transport links and thus has the latest cut-off time in Germany. In just four hours you can reach destinations across Germany. As such, company directors can utilise the transport benefits created by the location.

In recent years, northern Hesse has developed into one of the most dynamic and economically strong regions. Lots of jobs have

been created as a result of new company start-ups and the expansion of companies already located here.

And, last but not least, northern Hesse is uniquely diverse and full of life. Four natural parks, a UNESCO World Heritage Site National Park and Germany's oldest nature reserve form the backdrop to lively towns of timber-framed buildings, picturesque castles and palaces, as well as the big city flair of the documenta town of Kassel.







[www.die-lage-ist-gut.de/en/thelocation/keyfigures](http://www.die-lage-ist-gut.de/en/thelocation/keyfigures)

The region of northern Hesse is home to many companies operating in the transport industry, logistics, decentralised energy, as well as in the healthcare sector. With the naming of Bergpark Wilhelmshöhe as the fourth UNESCO World Heritage Site in northern Hesse, the region has once again established itself as a popular tourist destination. Over the coming years, around 7.2 million visitors are expected – northern Hesse: at the top.

Here in northern Hesse, we have the future right in our sights and we offer the very best conditions for your company. Since the University of Kassel first opened its doors some 40 years ago, graduates have founded around 300 local companies, which have created over 10,000 jobs in sunrise industries.

We have compiled the five key industries, their key data and developments over recent years for you.

### Key data for the five key industries

Around a quarter of all employees subject to social insurance contributions work in the transport industry. Over 4,600 companies, 70,000 employees and a turnover of around 12 billion EUR: these are the figures that demonstrate the success of this industry.

Since 2002, over 80 investments totalling almost 2.5 billion EUR have been made in the logistics sector, which have, in turn, created around 7,500 extra jobs.

Northern Hesse has become a hot spot for regenerative energies, often called the Silicon Valley of regenerative energies. The branch will achieve 30,000 jobs in 2025.

Northern Hesse is home to over 11 health resorts and over 100 health clinics, around 1,500 practices specialising in holistic medicine, as well as around 100 companies working in the field of medical technology.

Each year, the region northern Hesse has about 11 million overnight stays, a count of around 2.3 million arrivals and a turnover of around 3 billion EUR.

Source: Statistics agencies & own calculations

A perfect position ....





# THE REGION OF NORTHERN HESSE...

The reasons as to why the region of northern Hesse now competes with the strongest locations in Germany are multifarious: northern Hesse has become a perfect example of a successful structural change.

Close cooperation between universities, institutes and companies sees new ideas being developed and highly qualified workers trained on a constant basis.

Because the decisive institutions work together, it is possible to transfer increasing amounts of know-how and new technologies – for example from the University of Kassel, our new founder university – into industrial applications.

Northern Hesse is an inspiration – 200 years ago, the Brothers Grimm wrote their fairytales here, acted as jurists, Germanists and politically active Europeans, who have left their trails in many places. In 1955, the documenta first opened its doors here as the largest and most important exhibition of contemporary art in the world. Today, people still enjoy the good "Ahle Wurst", and northern Hesse is also home to decision-makers and global market leaders. This overlap between historic and current components can only be found in northern Hesse and creates the ideal basis for the fulfilment of great goals.



## Kassel – The region's heartbeat

With just under 200,000 inhabitants, Kassel is the metropole of northern Hesse and, after Frankfurt and Wiesbaden, stands as the third-largest city in Hesse. Situated on the River Fulda, the city is a modern centre of commerce and offers plenty of opportunities to shop. The varied range of cultural offerings includes inimitable tourist attractions, which have won international renown.

Five diverse counties together with the City of Kassel combine to create the region of northern Hesse.







[www.die-lage-ist-gut.de/en/theregion](http://www.die-lage-ist-gut.de/en/theregion)

The Bergpark Wilhelmshöhe, with its water fountains and the symbol of Kassel – the Hercules – were named as World Heritage Sites in June 2013 and is with an area of 2.4 square kilometers, Europe's largest mountain garden. Further tourist attractions include Wilhelmshöhe Castle, which is home to a collection of Old Masters' paintings, the Fridericianum and the Brothers Grimm Museum with the brothers' personal copies of the children's fairytales, which have been included in UNESCO's Memory of the World Programme.

### Northern Hesse – Enobled by UNESCO

The Bergpark Wilhelmshöhe in Kassel and Grimm's fairytales stand as the region's UNESCO treasures, together with the Kellerwald-Edersee National Park and the International Tracing Service for Those Missing from the Second World War. You can find references to the Brothers Grimm and their fairytales across the region.

One example is in Reinhardswald with the „Sleeping Beauty Castle“ of Sababurg. Mother Hulda's home is at the top of the highest mountain in northern Hesse: the Hohe Meissner. In the Snow White village of Bergfreiheit near Bad Wildungen, one of the largest spa towns in Germany or in Red Riding Hood country, where the costume worn by the Schwälmer women is reminiscent of the world-famous fairytale by the Brothers Grimm. To the southwest of Kassel, the Edersee reservoir with its imposing dam is a great place to spend your free time. The reservoir is crowned by Waldeck Castle. Hesse's only national park, the Kellerwald-Edersee National Park, is also found here. It has been a UNESCO World Heritage Site since 2011. Its ancient beech forests are amongst the last large collections of beech trees in Europe. The annual festival held in the Bad Hersfeld abbey ruins is a must for culture vultures. Top quality concerts and recitals featuring famous performers can be found in unusual venues during the northern Hesse Summer of Culture, which takes place each year.



*Grimm Heimat*  
NordHessen

The Brothers Grimm found their home in northern Hesse. Today, northern Hesse, home to the Grimms, represents an upwardly aspiring tourist region with numerous cultural and natural treasures. Visit [www.grimmheimat.de](http://www.grimmheimat.de) for more information.



A perfect position ....



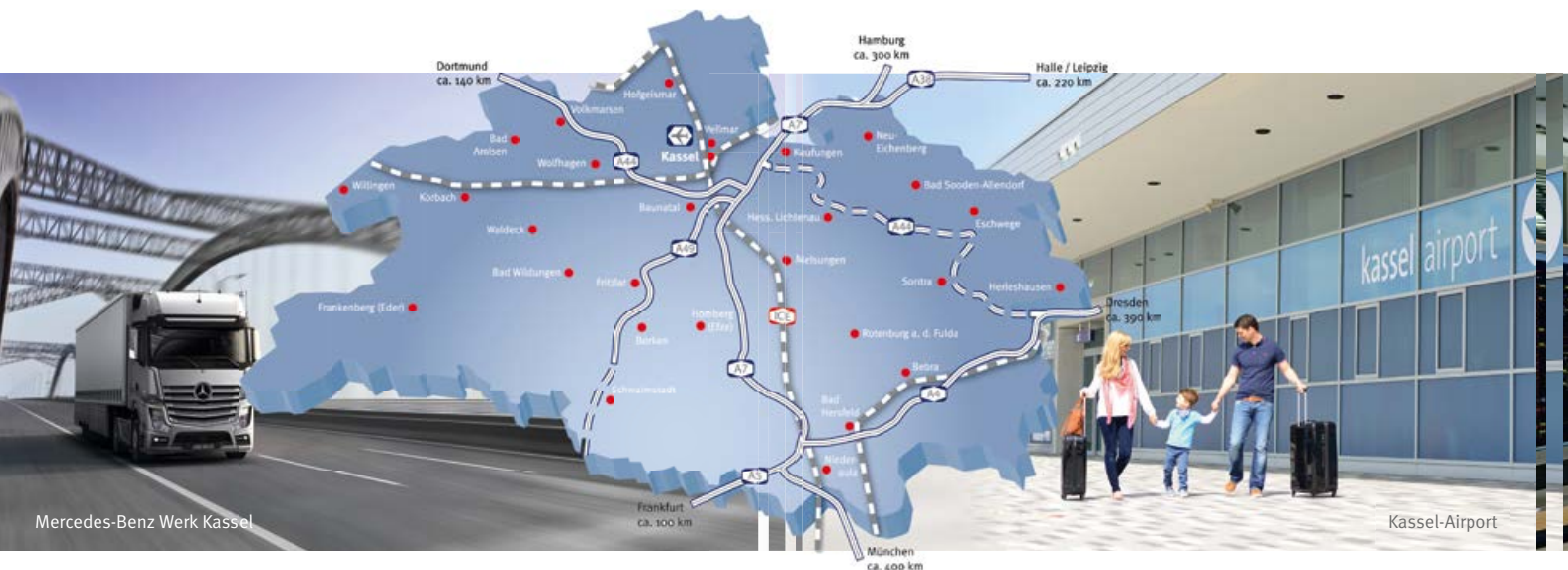
# THE LOCATION....

## Northern Hesse – Central and close by

Northern Hesse is in the middle of Europe and it is the geographic centre of the Federal Republic of Germany measured in terms of its accessibility. Thanks to its optimum infrastructure, you can reach destinations in the south, north, in the west or in the east in almost the same time. The best cut-off time for Germany is one reason for companies in the mobility industry to settle in northern Hesse and it is also a benefit for anyone who wants to position him- or herself on the world market. This region not only has a perfect link to the motorway. It is also in the middle of the north-to-south high speed route of the Deutsche Bahn.

This infrastructure is completed by the regional Kassel-Airport, newly opened up on the 4th April 2013.

Its central position ensures major logistic efficiency and engenders synergy effects by focusing the energies from production, trade and the Kassel University. That spells out ideal conditions for settling various businesses ranging from fresh goods to general services.





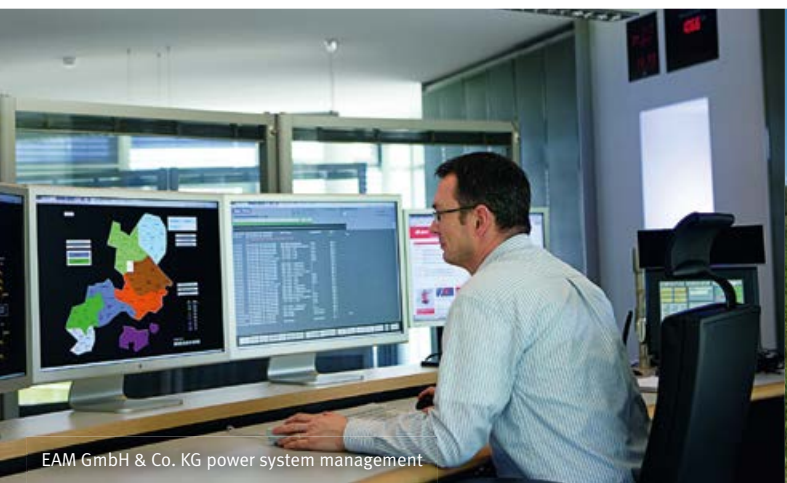


[www.die-lage-ist-gut.de/en/thelocation](http://www.die-lage-ist-gut.de/en/thelocation)

Global market giants like Amazon Eu S.a.r.l., Libri GmbH and the Original Teile Center (OTC) from Volkswagen AG already utilise the logistical advantages that northern Hesse has to offer.

One real convincer for companies is the great-value, large distribution warehouses, which have been planned and built in line with an innovative traffic management concept, which takes the quickest possible access to the motorway and rail network into account.

Quick uptimes and local expertise ensure that interested companies can move their premises to northern Hesse as early as tomorrow.



EAM GmbH & Co. KG power system management



RegioTram Nordhessischer VerkehrsVerbund

A perfect position ....



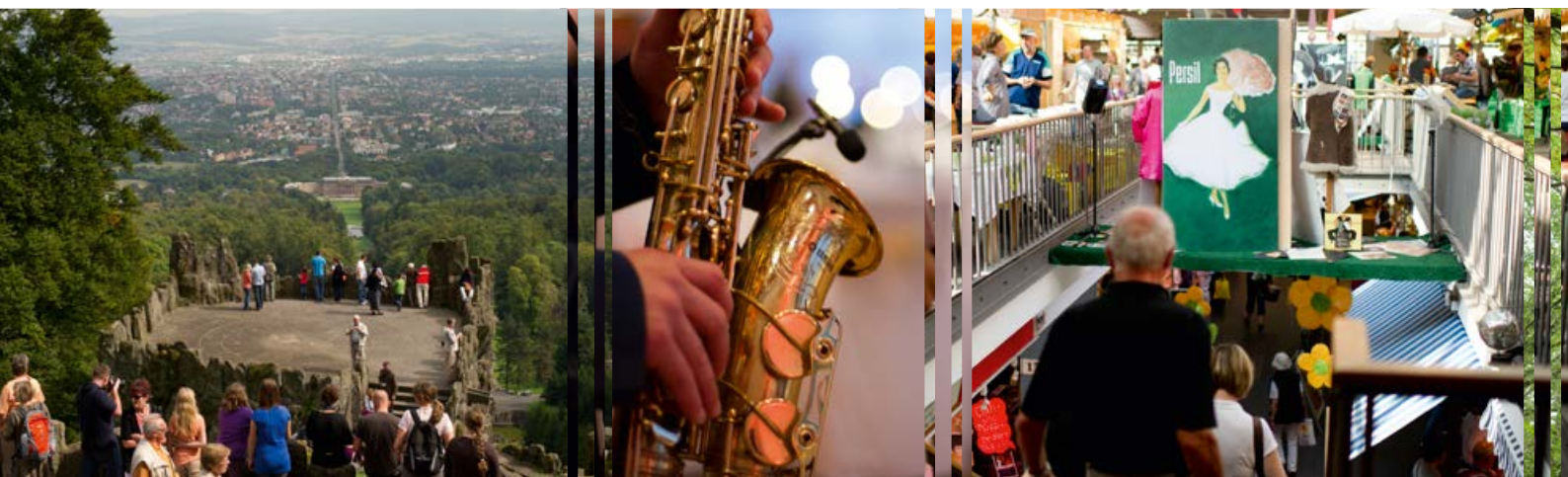


# THE LIFE...

## Northern Hesse – Lovely and lively

Northern Hesse entices with its intact nature, an important range of cultural attractions, its multitude of leisure and health facilities, and its numerous tourist attractions. Over 100 museums, 30 festivals and concert programmes and ten theatres invite the people of northern Hesse to enjoy some fantastic entertainment. Thanks to the land-graves' rule, you can find some fascinating buildings from the Middle Ages, the Baroque and the Rococo periods in the region. These cultural treasures have been setting global benchmarks and remain pioneers to this day. Picturesque parks present a gateway to the past and enchant visitors with their fairytale atmospheres.

Yet it is not just the famous tourist attractions like Bergpark Wilhelmshöhe with its water fountains, the Edersee region with the national park or the walking paradise around the Hohe Meissner mountain that are worth a visit. Northern Hesse is also home to a whole host of little gems. Thus, for example, you can visit the Schiffersgrund Border Museum in Bad Sooden-Allendorf, or the Hesse Mining Museum in Borken, and experience the history of the region with all of your senses. Kassel State Theatre, Bad Arolser Baroque Festival, Bad Hersfeld Festival and the northern Hesse Summer of Culture are all marquee cultural events that are accompanied by a range of small, high-quality cultural events across the entire region.







[www.die-lage-ist-gut.de/en/life](http://www.die-lage-ist-gut.de/en/life)

Northern Hesse is sporty and youthful. Be it ski jumping in Willingen or the annual „Open Flair“ festival in Eschwege – sports and music fans from the whole of Germany flock to the region. There is a lot to discover.

We see ourselves as a region with a feeling of well-being. In northern Hesse you can find numerous spa towns, clinics and practices specialising in holistic medicine. Oases in which you can escape the demands of the everyday, indulge the body and let your spirit flow.

Northern Hesse is also an attractive region thanks to the low cost of living and the great real estate prices. These are valued by the residents and provide a little financial freedom so that they can realise their personal dreams.

With wildlife parks, sightseeing tours, guided city tours and many other extraordinary leisure activities, northern Hesse promises the utmost enjoyment. Many types of sport are possible here: from climbing, running, canoeing and hiking to skiing and tobogganing.



A perfect position ....



# UNIQUE FROM NORTHERN HESSE ...

## The unique ...



... course of studies in nanostructure sciences – the University of Kassel is the only university in Germany to offer a bachelor's and master's in nanostructure sciences.



... water features in Bergpark Wilhelmshöhe – the water features in the Wilhelmshöhe landscape park, which was declared a UNESCO World Heritage Site in 2013, are powered entirely by pumpless technology.



... Museum für Sepulchralkultur – the Museum for Sepulchral Culture is the only museum in the world devoted to death and dying.

## The first ...



... clock in the world with a second hand – clockmaker Jost Bürgi built the first ever clock with a second hand in Kassel in 1585 at a time when almost no one had any idea what a second was.



... plastic cannula for continuous infusion – the first plastic cannula for continuous infusion was invented by Bernd Braun (great-grandson of company founder B. Braun) in 1962.



... pedestrianized area in Germany – the Treppenstrasse in Kassel was the first pedestrianized area to be planned and put in place in Germany. It was inaugurated in 1953.





[www.die-lage-ist-gut.de/en/life/unique](http://www.die-lage-ist-gut.de/en/life/unique)

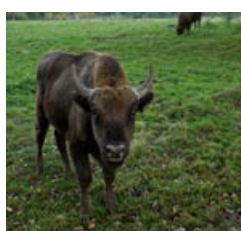
### The oldest ...



... festival in Germany – the Lullusfest in Bad Hersfeld is the oldest festival in Germany and has been celebrated in honour of Archbishop Lull, the founder of Bad Hersfeld, since 852.

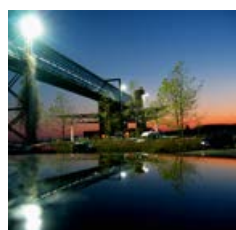


... symphony orchestra in Germany – the Kassel Staatsorchester was formed in 1502 and is the oldest symphony orchestra in Germany, and one of the oldest in the world.



... zoo in Europe – Sababurg zoo was opened as long ago as 1571, making it the oldest zoo in Europe.

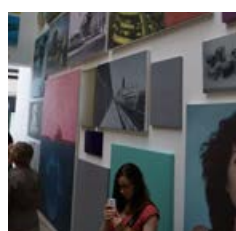
### The largest ...



... original parts centre in Europe – Volkswagen's Original Parts Centre is the largest spare parts warehouse in Europe, covering an area of one square kilometre.



... ski-jumping hill – the Mühlenkopfschanze in Willingen is the largest ski-jumping hill in the world, where skiers can jump over 150 metres.



... exhibition of contemporary art – the documenta in Kassel is currently the world's largest and most important exhibition of contemporary art, and is held every five years.

A perfect position ....



# THE JOBS ...

## Northern Hesse – Home to innovative companies

With its global market leaders, hidden champions and centres of innovation, the region features a heterogeneous industry structure, which provides workers with a wide range of options when it comes to careers and ways to earn a living. Meanwhile, the well-established educational infrastructure guarantees the very best conditions to schooling and training and is a key pillar for the future development of the key industries.

### Transport industry

The most important industry in the northern Hesse region in terms of pure economics is the transport industry. This includes the fields of vehicle construction/automotive, rail engineering, logistics and transport management, and electromobility. World-class companies have their production sites here, for example Volkswagen AG in Baunatal, Daimler AG and Bombardier Transportation AG in Kassel as well as Continental AG in Korbach.

### Decentralised energies

Renewable energies – one of the region's growth industries. In recent years, extensive knowledge has been accrued regarding the topic of decentralised energies and energy efficiency. The development has benefitted from the University of Kassel's early focus on environmental and energy topics. This has been accompanied by the founding of successful companies, such as the SMA Solar Technology AG, now known across the world for inverter technology and energy management systems. Numerous other companies in the region, the

University of Kassel and various research institutions such as the Fraunhofer IWES (Institute for Wind Energy & Energy Systems Technology) are working in the field of decentralised energy technologies and energy efficiency. Together, they are turning northern Hesse into a hot spot within the energy sector that is gaining renown across the globe.

### Health

The health economy is a key pillar of the northern Hesse economy. 11 health resorts and spa towns, almost 100 clinics and more than 1,500 practices provide holistic medical care with medical expertise known beyond the region's borders. Around 100 companies are active in the field of medical technology, including B. Braun Melsungen AG, one of the leading providers of healthcare. Over 65,000 employees generate a gross value added of 3.1 billion EUR per annum. A network focusing on innovative topics has been established: the Health Region of northern Hesse. By networking skilled partners from science and education, industry and provision, the potentials in the healthcare sector are being utilised, in turn strengthening the region of northern Hesse.

### Tourism

We place a special focus on our tourist potential. Tourist sites and spa towns are highlighted in all regional analyses and development concepts. Building on pre-existing partnerships, the tourism cluster has developed into a broad network of regional and local tourism organisations, hotels and restaurants since the founding of regional management. Since 2009, this network, which has been further expanded by the most varied service companies, has been brought together under the common umbrella brand "GrimmHeimat NordHessen".





[www.die-lage-ist-gut.de/en/jobs/jobexchange](http://www.die-lage-ist-gut.de/en/jobs/jobexchange)



Regionalmanagement Nordhessen  
exhibition stand at EXPO Real 2014

## Location marketing northern Hesse

One of the key elements of the cross-sectional work in northern Hesse is location marketing. The region northern Hesse is one of the most attractive European regions which generates ideas and innovation and therefore offers families, qualified employees and companies quality of life and future jobs centrally located within Europe.

The website [www.die-lage-ist-gut.de](http://www.die-lage-ist-gut.de) not only contains more information about the region but also gives an overview of job vacancies, education and training opportunities and internships with businesses based in northern Hesse. As well as the job portal, there is also the “cleverheads Nordhessen” online platform that offers local businesses a solution for joint recruiting via recommendation management.

## Promotion Nordhessen – Support for start-ups

The nationwide business plan competition promotion Nordhessen has been supporting young entrepreneurs in the start-up phase since 1999/2000 and is one of the longest-running business plan competitions in Germany.

The competition offers comprehensive and free advice concerning the development of individual business strategies. The accompanying events – including seminars and workshops, regular pub meets and coaching sessions – provide new entrepreneurs with key knowledge regarding drawing up a business plan, financing the business and personnel recruitment.



WIKUS Futura hall

A perfect position ....





# THE COMPANIES...

## Northern Hesse – Tradition and modernity in harmony

The region of northern Hesse has a long tradition of being a location for industry and commerce. Today, the business landscape is shaped by a range of new companies, including renowned global market leaders, which are successfully active in both traditional and new sectors and markets on an international level.

Our companies from northern Hesse are providing the world markets with innovative business ideas, are manufacturing specialist products and are sharing expertise that is globally in demand.

Volkswagen AG has its second-largest production site in Baunatal near Kassel. 15,500 employees work there, producing the cars of tomorrow. Volkswagen AG is the largest production operation in northern Hesse and represents a job engine for the region.

Renowned companies like Daimler AG, Bombardier Transportation AG, Hübner GmbH & Co. KG, Krauss-Maffei Wegmann GmbH & Co. KG, Rheinmetall AG, Continental AG and AKG Verwaltungsgesellschaft mbH have their production sites in northern Hesse and are strengthening the expertise of the transport industry.



B. Braun Melsungen AG factory W, production of dialysis machines & infusion pumps



TWIKE electric vehicle by FINE Mobile GmbH



Sunny Central SMA Solar Technology AG





Factory facade from Volkswagen AG in Kassel



[www.die-lage-ist-gut.de/en/jobs/jobexchange](http://www.die-lage-ist-gut.de/en/jobs/jobexchange)

B. Braun Melsungen AG, manufacturer of pharmaceuticals and medicines, is based in Melsungen and, with almost 6,000 employees, is the second-largest employer in the region.

Other companies contributing to the dynamism of the region include SMA Solar Technology AG, Wintershall Holding AG and the K+S Aktiengesellschaft.

Logistics companies like Amazon Eu S.a.r.l., DHL Freight GmbH, GLS and Rudolph Logistik are also all using the central

location of the region to their benefit, thus securing savings. The latest cut-off time means that in northern Hesse it is possible to place orders late in the day and have the goods the very next day, guaranteed. A key benefit for customers and the companies themselves.

The good location, the constant availability of good value premises and the well-qualified potential workforce all mean that the region of northern Hesse is predestined to be a location for the transshipment of goods.



Bombardier Transportation AG factory Kassel, at night



Mercedes-Benz Werk Kassel



FLÖTTWERK GmbH & Co. KG manufacturing of grids

A perfect position ....





# TOP-LOGISTICS LOCATIONS...

## You cannot get more central than this!

These days, northern Hesse can no longer be ignored on the map of logistics investors. In 2010, the region recorded the largest gross growth in floor area in the logistics industry after Hamburg and the Ruhr; twice as much as in the Rhine-Main region. Industry leaders like Schenker Stinnes Logistics, Hermes Logistik Gruppe and DHL Freight GmbH all operate their largest transshipment centres in northern Hesse. Warehouses such as Rewe, Edeka or Dänische Bettenlager supply their branches from here. In the logistics sector, margins are low; as such, efficiency is of the utmost importance: logistics service providers were quick to organise themselves into networks in order to avoid empty trips. As a result, there are a number of so-called hubs in northern Hesse, where piece goods are loaded in order to save time and money.

Those responsible have used strategic approaches and intelligent space storage policies to achieve dynamic development and to turn northern Hesse into a location that is demonstrating strong growth for all types of logistics services. Logistics companies from various disciplines are situated in the region and have become successful here. High-tech mail-order companies like Amazon Eu S.a.r.l. and Libri GmbH have been able to achieve formidable growth rates here.

Original Teile Center (OTC) from Volkswagen AG in Baunatal has developed into the largest replacement parts centre in the world with over 400,000 components in a one million square metre large storage area.



High-bay warehouse, Zufall Logistics Group



## Landkreis Waldeck-Frankenberg



## The quick location

You cannot reach the Rhine or Ruhr metropole regions quicker than from here, whilst at the same time enjoying a good location with regard to the big cities and coastal towns in northern Germany. You will not find better value real estate quicker than here. And the location is growing: an additional 200,000 m<sup>2</sup> are currently being prepared. These are all reasons that make this logistics location one of the best – and not just in northern, but in the whole of Hesse.

## Contact

Wirtschaftsförderung und Regionalmanagement  
 Waldeck-Frankenberg GmbH  
 Bahnhofstraße 8-12 · 35066 Frankenberg  
 Anna Blum  
 Phone: 06451-716080  
 info@wfg-hessen.de

## Areal data

Area category	Logistics, industrial estate
Total area	100,000 m <sup>2</sup>
Available areas	100,000 m <sup>2</sup>

## General data

Availability	immediately
Owner	Stadt Diemelstadt
Land development plan / building plan effective	yes / partial
Price / m <sup>2</sup>	on request

## Transport connections

Distance from freeway	(A 44) < 1 km
Distance from freeway	(A 33) 25 km
Distance from freeway	(A 7) 50 km

Distance from highway	(B 252) 0.2 km
Distance from highway	(B 7) 4 km
Distance from highway	(B 68) 8 km
Distance from ICE train	Warburg, 12 km
Airport Frankfurt/Main	approx. 220 km
Kassel-Airport	40 km
Airport Paderborn	40 km

## Connections

Electricity	yes
Drinking water	yes
Process water	yes
Sewage	yes
Gas	possible
District heating	possible
Broadband cable	yes

A perfect position ....





## WOLFHAGEN – BREUNA...

### The dynamic location

Things are done "dynamically" in the Hiddeser Feld. With the successful relocation of the REWE logistics centre, the benefits of this location have been impressively documented. This has been further supported with the construction of a production plant for mineral water (Vitaqua), which is of supra-regional significance. Above all it is large scale productions that can benefit from a location such as this; however all sites can also be lotted up as required.

### Contact

Wirtschaftsförderung Region Kassel GmbH  
Kurfürstenstraße 9 · 34117 Kassel  
Phone: 0561-70733 50  
info@wfg-kassel.de  
www.gewerbepark-a44.de

### Areal data

Area category	Industrial estate
Total area	570,000 m <sup>2</sup>
Available areas	175,000 m <sup>2</sup>
Largest site	105,000 m <sup>2</sup>

### General data

Availability	immediately
Owner	public
Land development plan / building plan effective	yes / yes
Price / m <sup>2</sup>	29.50 €

### Transport connections

Distance from freeway	(A 44) < 1 km
Distance from highway	(B 7) approx. 8 km
Distance from ICE train	Kassel, 27 km
Airport Frankfurt/Main	approx. 220 km
Kassel-Airport	18 km
Airport Paderborn	approx. 57 km

### Connections

Electricity	yes
Drinking water	yes
Process water	no
Sewage	yes
Gas	yes
District heating	no
Broadband cable	yes



## Region Kassel

## GOODS DISTRIBUTION CENTRE OF KASSEL...

## The complete location

You cannot get more: storing, picking, packing and shipping by road or rail are all "standard" at this location. The latest infrastructure with the KV Terminal and synergies with the innovative surroundings – from products to trade to research (University of Kassel) – complete one of the outstanding goods distribution centre locations in Germany.

## Contact

Wirtschaftsförderung Region Kassel GmbH  
Kurfürstenstraße 9 · 34117 Kassel  
Phone: 0561-70733 50 · [gvz@wfg-kassel.de](mailto:gvz@wfg-kassel.de)  
Zweckverband Raum Kassel (ZRK)  
Ständeplatz 13 · 34117 Kassel  
Phone: 0561-10970 33 · [michael.hess@zrk-kassel.de](mailto:michael.hess@zrk-kassel.de)

## Areal data

Area category	Logistics
Total area	850,000 m <sup>2</sup>
Available areas	8,000 m <sup>2</sup>
Largest site	8,000 m <sup>2</sup>

## General data

Availability	immediately
Owner	public
Land development plan / building plan effective	yes / yes
Price / m <sup>2</sup>	55.00 €

## Special features

Container terminal available

## Transport connections

Distance from freeway	(A 7) < 1 km
Distance from highway	(B 83) < 1 km
Distance from ICE train	Kassel, 6 km
Airport Frankfurt/Main	approx. 190 km
Kassel-Airport	17 km
Airport Paderborn	approx. 90 km

## Connections

Electricity	yes
Drinking water	yes
Process water	yes
Sewage	yes
Gas	yes
District heating	no
Broadband cable	yes

A perfect position ....



## SCHWALM-EDER MITTE...

### The central location

A commercial location with central-European significance, situated in the immediate vicinity of the A 7 motorway Homberg (Efze) exit. The short distance from the A 49 motorway, which provides a direct link to the Ruhr via the A 44, makes important economic locations quick to reach. Meanwhile, the A 5 and the A 4 motorways mean that there are also good links in the East-West direction. All in all, it is a location that regional and supra-region companies from all sectors will find to provide the very best conditions.

### Areal data

Area category	Industry park
Total area	618,277 m <sup>2</sup>
Available areas	170,000 m <sup>2</sup>
Largest site	70,000 m <sup>2</sup>

### General data

Availability	immediately
Owner	public
Land development plan / building plan effective	yes / yes
Price / m <sup>2</sup>	33.00 €

### Contact

Kreisausschuss des Schwalm-Eder-Kreises  
Wirtschaftsförderung  
Parkstraße 6 · 34576 Homberg (Efze)  
Rainer Geisel  
Phone: 05681-775470  
Rainer.Geisel@schwalm-eder-kreis.de

### Transport connections

Distance from freeway	(A 7) < 1 km
Distance from ICE train	Kassel, 45 km
Airport Frankfurt/Main	approx. 150 km
Kassel-Airport	45 km
Airport Paderborn	approx. 125 km

### Connections

Electricity	yes
Drinking water	yes
Process water	yes
Sewage	yes
Gas	yes
District heating	no
Broadband cable	possible





### The all-round location

Our location enables investors to be flexible. Production, service, energy and logistics are all possible here. Ludwigsau/Bad Hersfeld is a central location with very good transport connections (A 4 less than 8 km away), enabling more time for production, service and maintenance when delivery times are fixed. Logistics companies such as Libri, Amazon, GLS, DHL, Kühne & Nagel, 24Plus, System Alliance and Hermes have already recognized this, and the strategic benefits of Hersfeld-Rotenburg are one of the reasons why they chose to move here.

### Areal data

Area category	GI
Total area	845.000m <sup>2</sup>
Available areas	425,000 m <sup>2</sup>
Largest site	204,974 m <sup>2</sup>

### General data

Availability	immediately
Owner	public
Land development plan / building plan effective	yes / yes
Price / m <sup>2</sup>	on request

### Contact

Wirtschaftsförderungsgesellschaft für den Landkreis  
Hersfeld-Rotenburg mbH  
Leinenweberstraße 1 · 36251 Bad Hersfeld  
Bernd Rudolph  
Phone: 06621-944110  
Fax: 06621 – 944101  
buero@wfg-hef-rof.de  
www.wfg-hef-rof.de

### Transport connections

Distance from freeway	(A 4) 8 km
Distance from freeway	(A 7) 20 km
Distance from highway	(B 27) 1 km
Distance from ICE train	Kassel 63 km
Airport Frankfurt/Main	approx. 150 km
Kassel-Airport	approx. 113 km
Airport Paderborn	approx. 138 km

### Connections

Electricity	yes
Drinking water	yes
Process water	yes
Sewage	yes
Gas	yes
District heating	no
Broadband cable	possible

A perfect position ....





## The large location

There is definitely space to implement even the biggest of ideas here. Situated directly by the junction between the A 7 and A 38 motorways, this area between Göttingen and Kassel provides the ideal starting point for logistic transportations from and to the East. The area's railway link and the nearby rail hub of Neu-Eichenberg also mean that here you can find the very best conditions for goods transportations and transport links for personnel in all directions. Summary: an ideal location, above all for a logistics park A 38.

## Contact

Wirtschaftsförderungsgesellschaft  
Werra-Meißner-Kreis mbH  
Niederhoner Straße 54 · 37269 Eschwege  
Siegfried Rauer  
Phone: 05651-7449 12 · Fax: 05651-7449 20  
siegfried.rauer@wfg-werra-meissner.de  
www.wfg-werra-meissner.de

## Areal data

Area category	Logistics
Total area	820,000 m <sup>2</sup>
Available areas	680,700 m <sup>2</sup>
Largest site	350,000 m <sup>2</sup>

## General data

Availability	immediately
Owner	public
Land development plan / building plan effective	yes / yes
Price / m <sup>2</sup>	on request

## Special features

Railway sidings building law available

## Transport connections

Distance from freeway	(A 38) 2 km
Distance from freeway	(A 7) 7 km
Distance from highway	(B 27) < 1 km
Distance from ICE train	Göttingen, 17 km
Airport Frankfurt/Main	approx. 240 km
Kassel-Airport	approx. 48 km
Airport Paderborn	approx. 125 km
Airport Hannover	approx. 130 km

## Connections

Electricity	yes
Drinking water	yes
Process water	yes
Sewage	yes
Gas	yes
District heating	no
Broadband cable	yes



# LEGAL NOTICE...

## Publisher:

Regionalmanagement Nordhessen GmbH  
 Ständeplatz 13  
 34117 Kassel  
 Phone +49 (561) 97062 00  
 Fax +49 (561) 97062 22  
[info@regionnordhessen.de](mailto:info@regionnordhessen.de)  
[www.die-lage-ist-gut.de](http://www.die-lage-ist-gut.de)

## Photography:

- Amazon.de
- B. Braun Melsungen AG
- Bombardier Transportation GmbH
- EAM GmbH & Co. KG
- FINE Mobile GmbH
- FINOBA Automotive GmbH
- FLOTTWERK GmbH & Co. KG
- Flughafen GmbH Kassel
- Frauenhofer IWES, Institutsteil Energiesystemtechnik
- FRÄGER GmbH
- Friedrich Zufall GmbH & Co. KG
- Haas, Baunatal
- IDI Gazeley Brookfield Logistics Properties
- Kassel Marketing GmbH
- Konvekta AG
- Kreisstadt Bad Hersfeld
- Mercedes-Benz Werk Kassel
- MHK Museumslandschaft Hessen Kassel
- N. Klinger
- Nordhessischer VerkehrsVerbund
- Paavo Bläfield
- Patrick Brückel - Universität Kassel
- SMA Solar Technology AG
- Tourist-Info Willingen
- Universität Kassel
- Viessmann Werke GmbH & Co. KG
- Volkswagen AG, Werk Kassel
- WIKUS
- Wirtschaftsförderung – Kreisausschuss des Schwalm-Eder-Kreises
- Wirtschaftsförderung Region Kassel GmbH
- Wirtschaftsförderungsgesellschaft für den Landkreis Hersfeld-Rotenburg mbH
- Wirtschaftsförderungsgesellschaft Werra-Meißner-Kreis mbH
- Wirtschaftsförderung und Regionalmanagement Waldeck-Frankenberg GmbH





# THERE ARE REGIONS WITHOUT DIRECTION.

# AND THERE IS NORDHESSEN.

The region Nordhessen is one of the most attractive European regions which generates ideas and innovation and therefore offers families, qualified employees and companies quality of life and future jobs centrally located within Europe. E-energy, e-mobility and glass fibre technology are prospect projects in Nordhessen! Find more information and jobs on

[www.die-lage-ist-gut.de](http://www.die-lage-ist-gut.de)